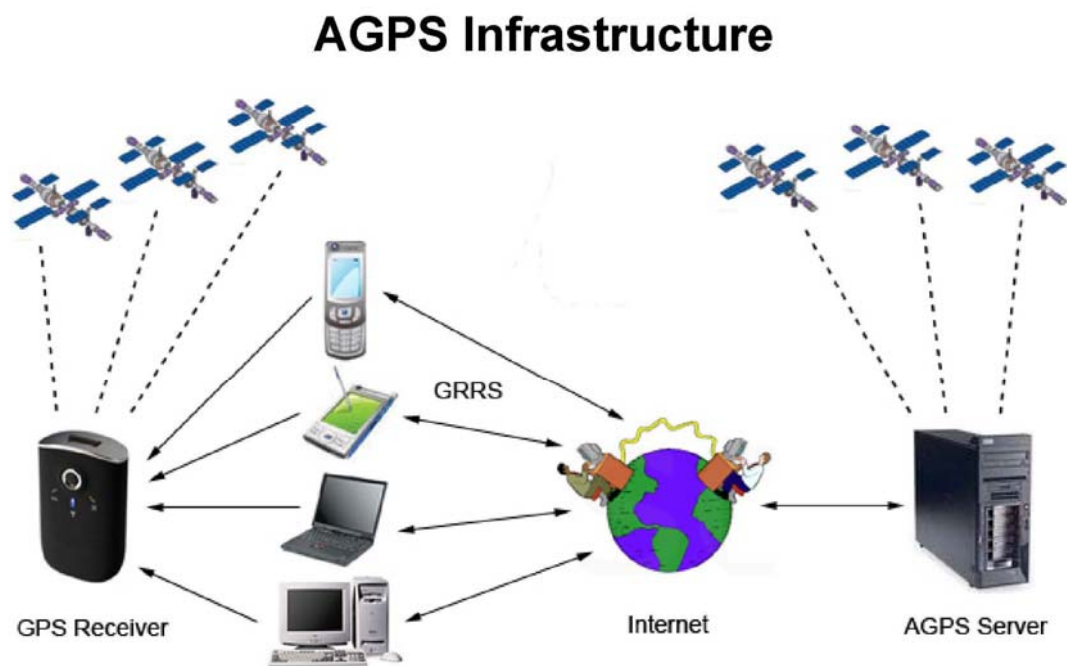


AGPS User's Manual (PC)

VENUS 6 series AGPS AGPS Infrastructure

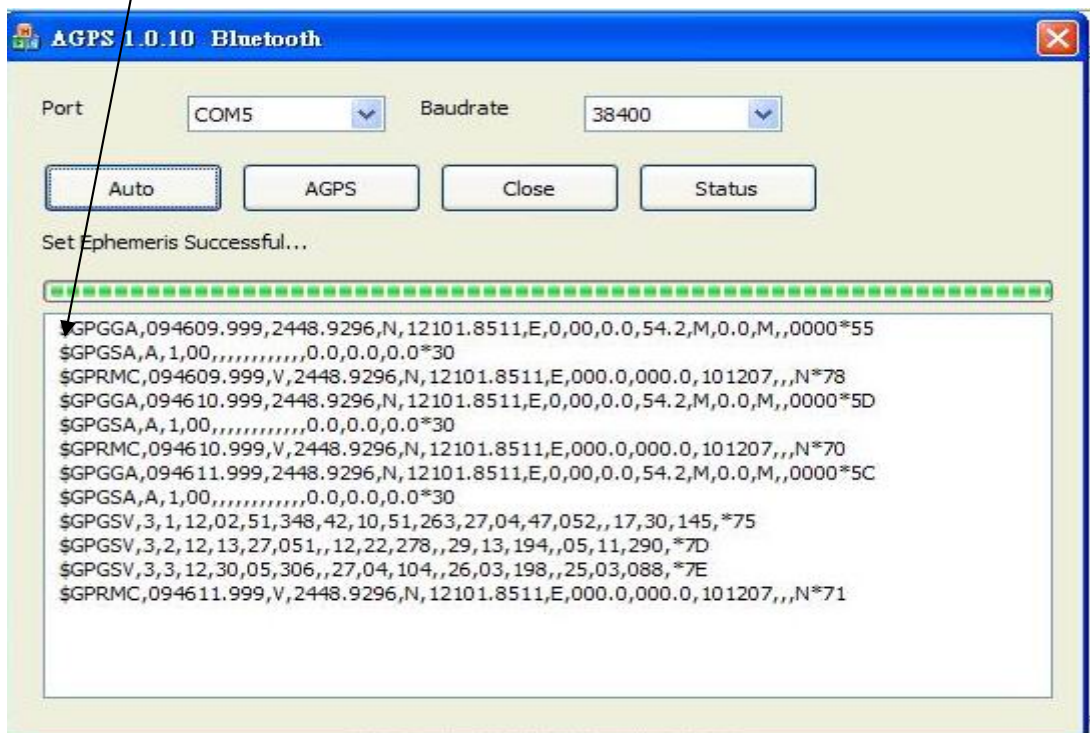
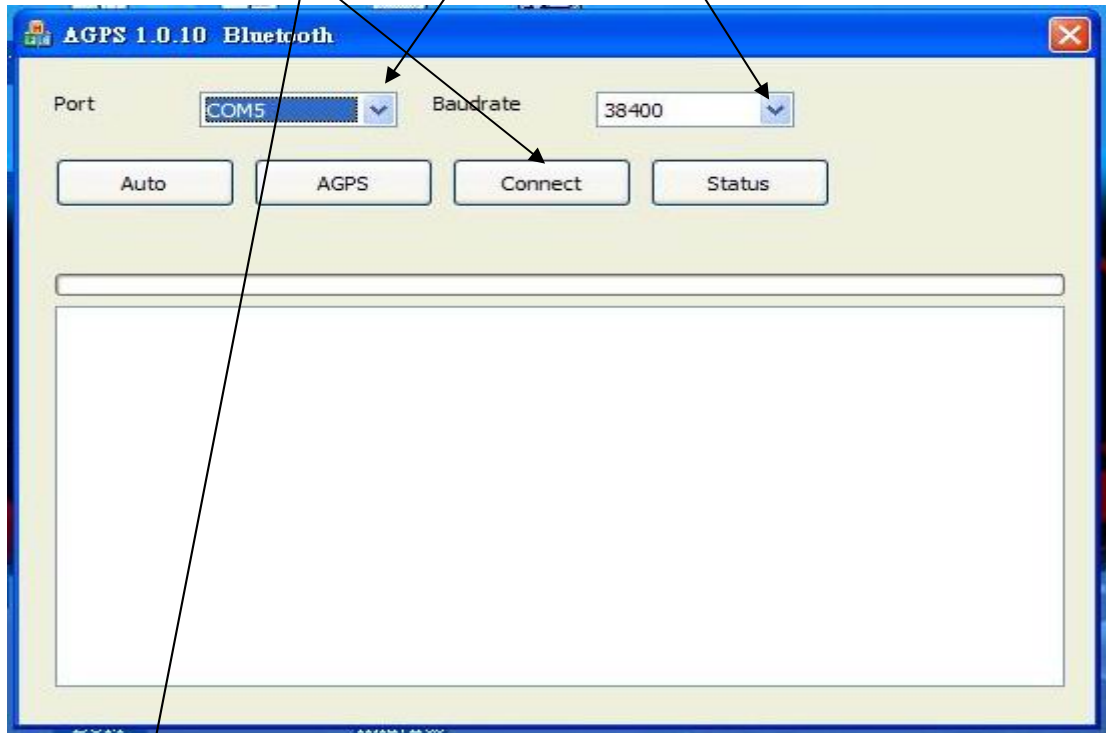


Preliminary, Proprietary and Confidential

Method A:

STEP 1: Connect your GPS device

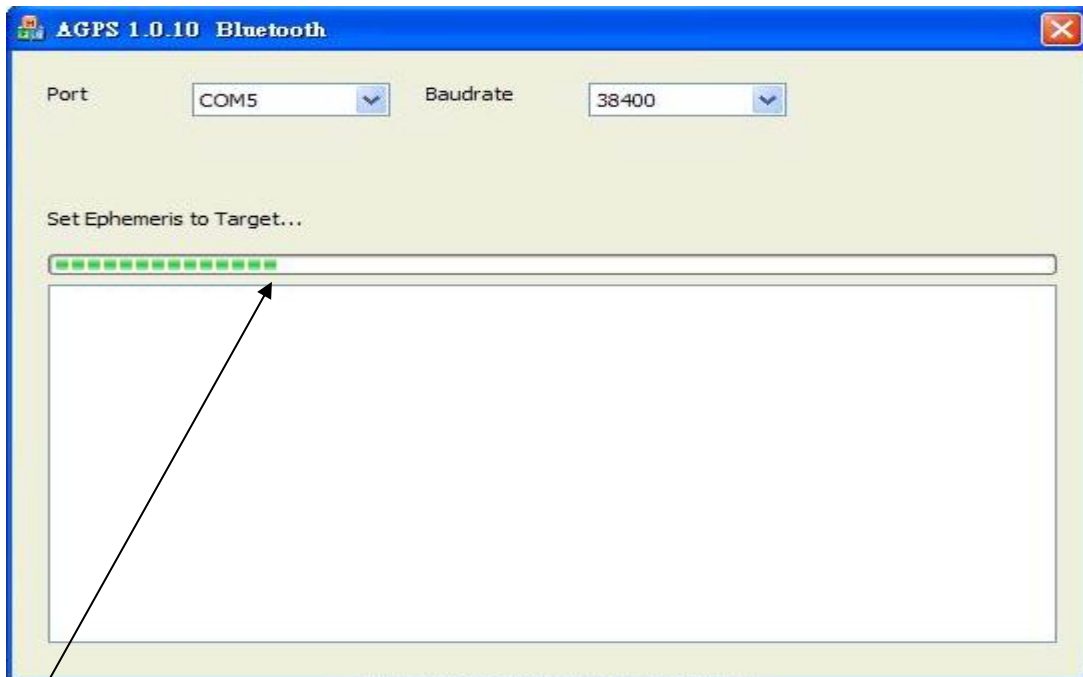
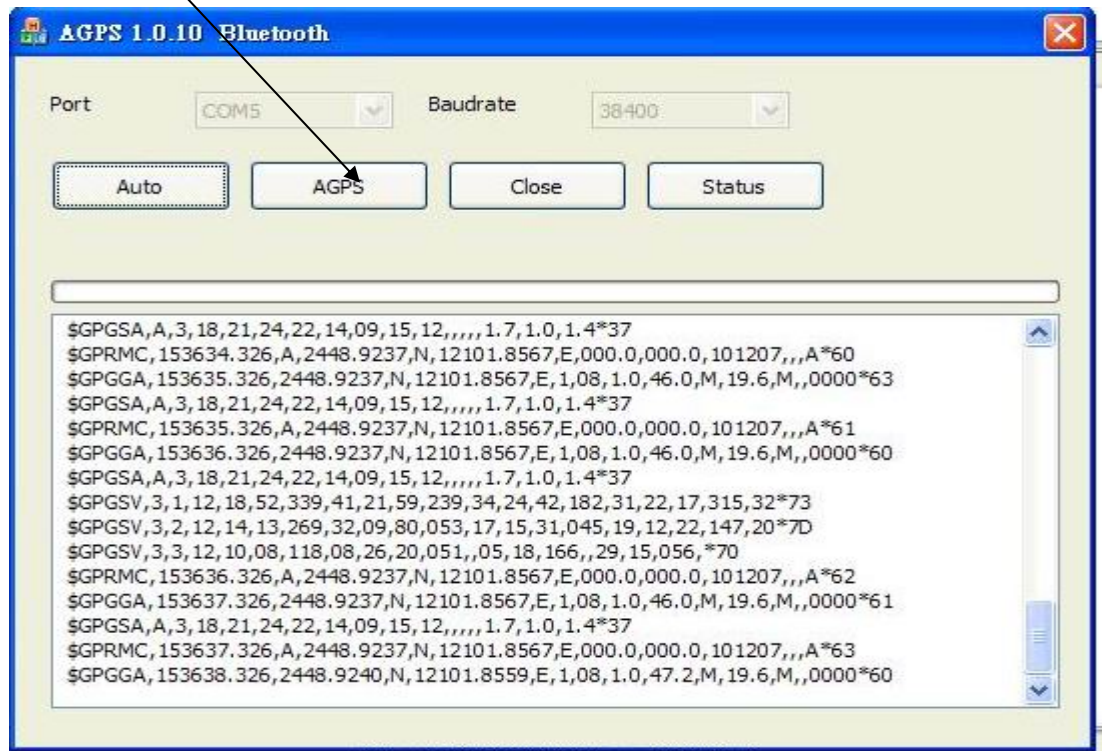
Connect your GPS device to PC, Choose Com Port and Baudrate
Click Connect See the NMEA Message



PS: Make sure your internet was connected

STEP 2: AGPS data download

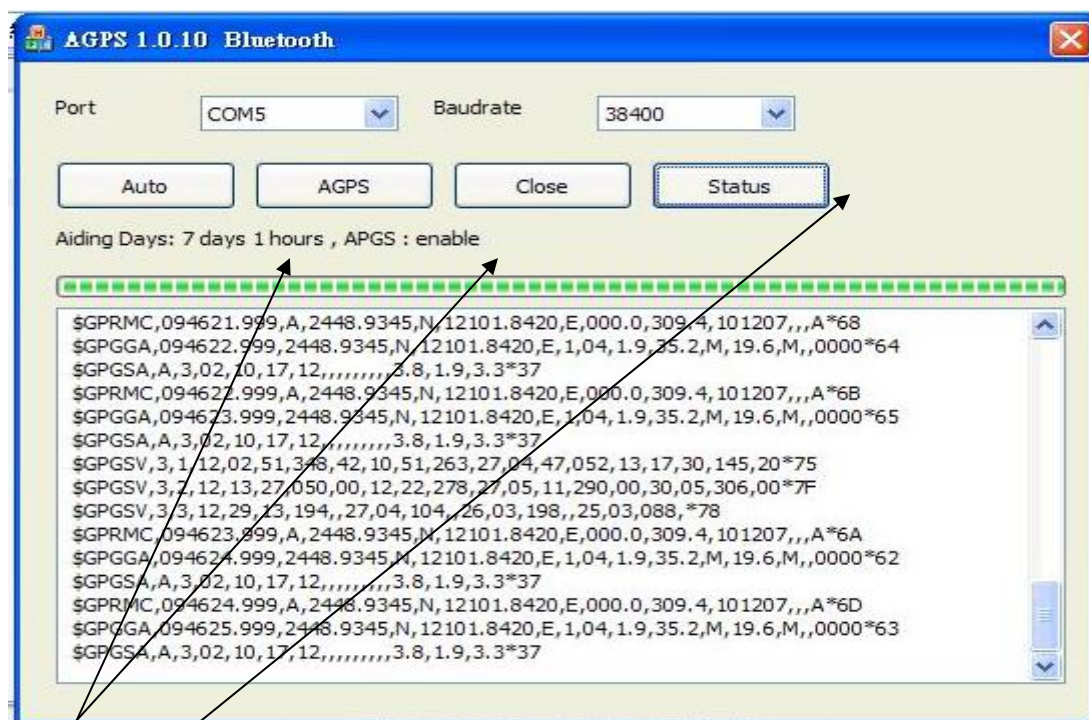
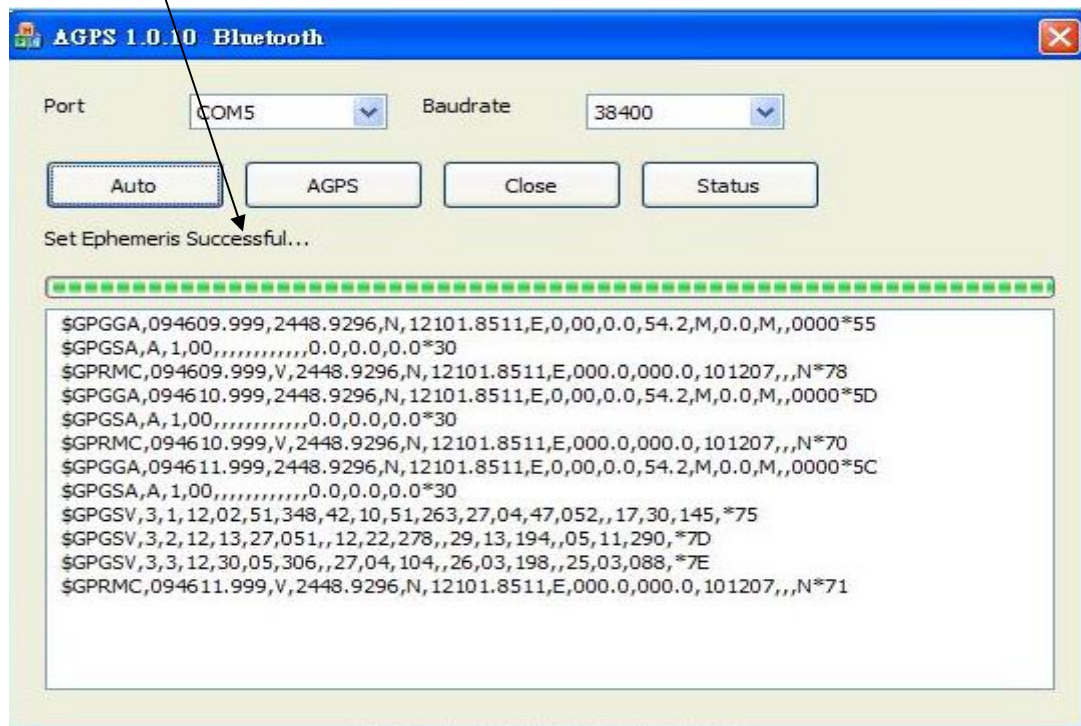
Choose AGPS Download



Automatic connect to internet and download to Flash memory

STEP 3: AGPS Download finish

Set Ephemeris Successful



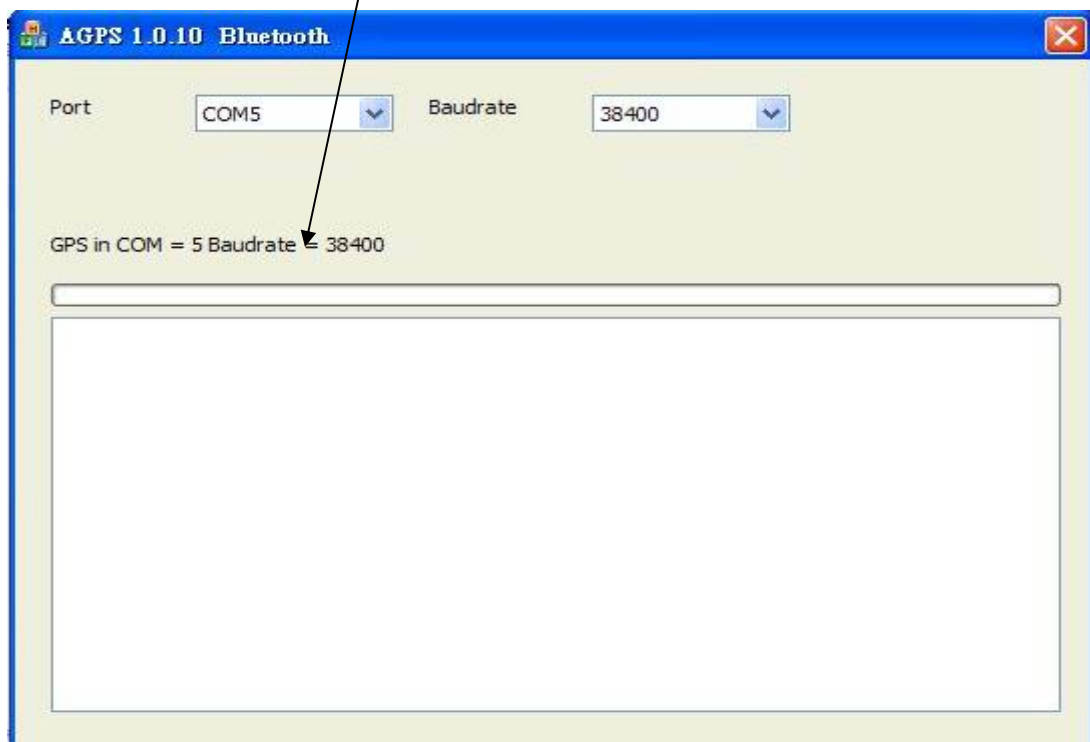
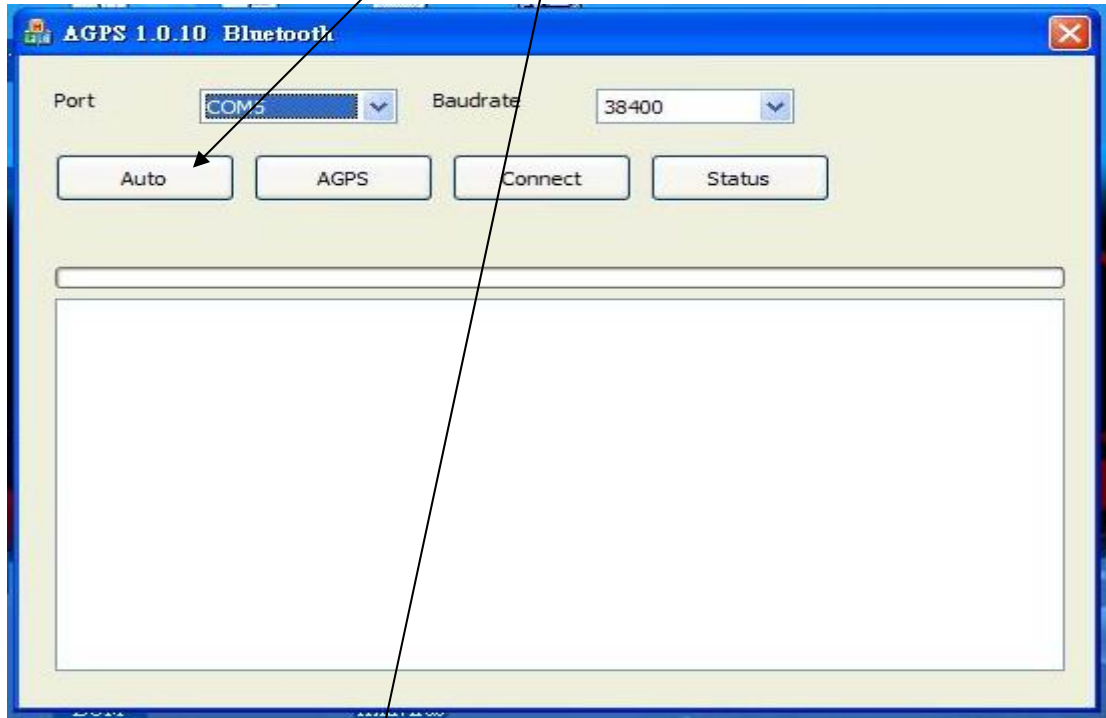
Option : AGPS Enable or Disable

Option : AGPS Status(7 days 1 hours)

Method B:

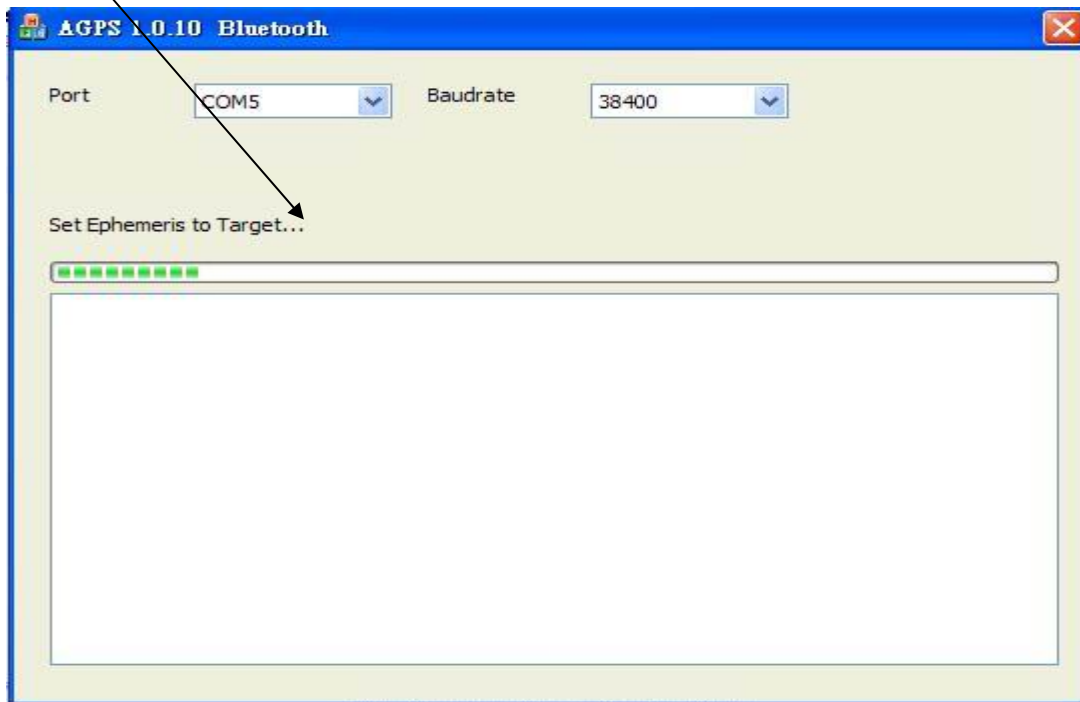
STEP 1: Connect your GPS device

Connect your GPS device to PC, Click Auto to scan Com Port

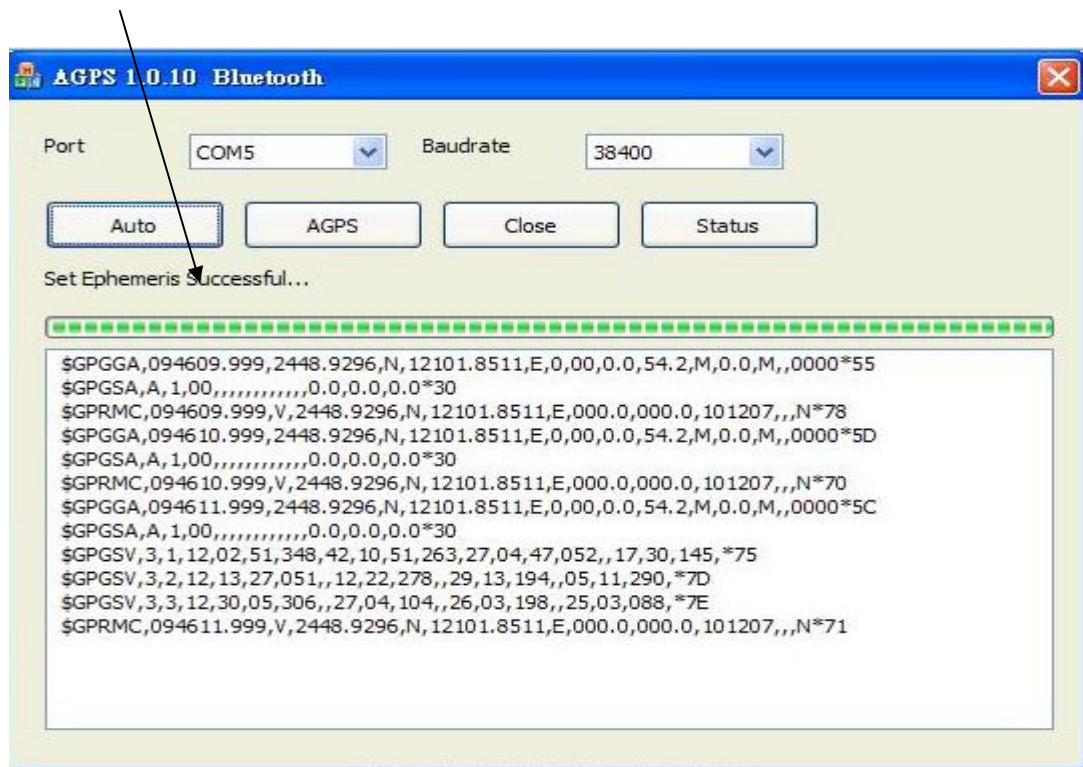


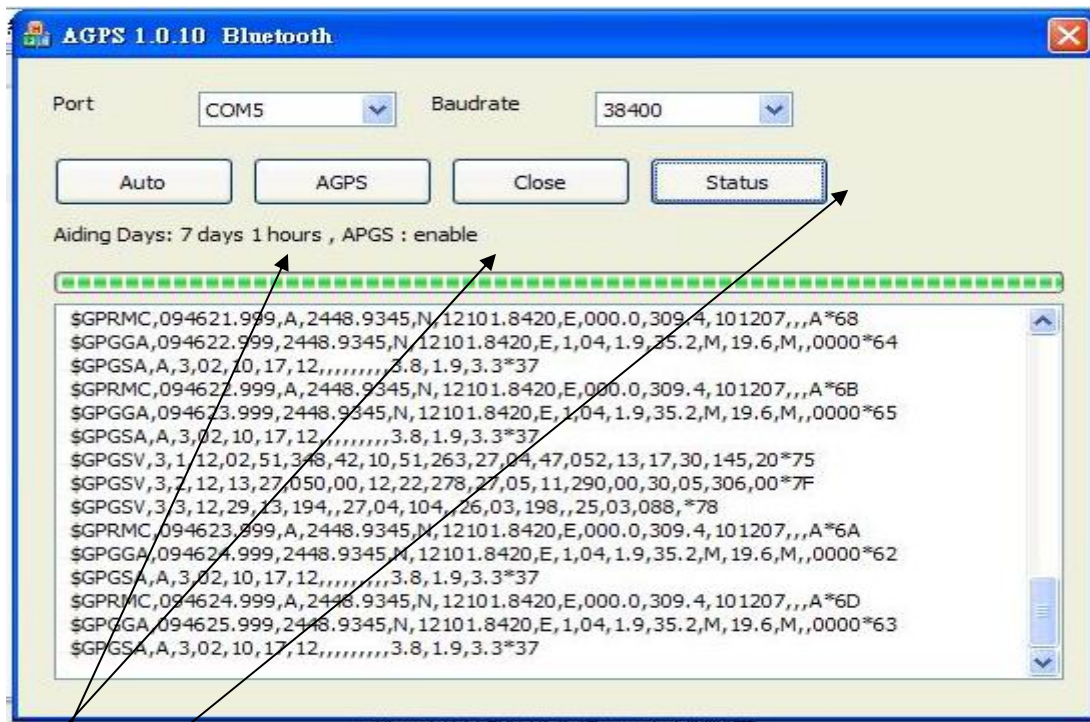
PS: Make sure your internet was connected

Automatic connect to internet and download to Flash memory



Set Ephemeris Successful





Option : AGPS Enable or Disable

Option : AGPS Status(7 days 1 hours)

STEP 1: Connect your GPS device

PS: Make sure your internet was connected



SkyTrack 0.4.4

File Binary Ephemeris **GPS** DataLog Download Help

Conn Port GPS Configure GPS Status **GPS Download**

Message Position fix 3D:

```
$GPRSV,3.2,12.01,40.353,28.302,40.40,19.22,26.18
$GPRSV,3.3,12.06,34.087,20.11,31.05,07.043,18
$GPRMC,100759.001,A,2459.7911,N,12130.0889,E,
$GTOCA,100759.001,2459.7911,N,12130.0889,E,1,
$GPRGA,A,3,16,07,01,30,22,41,1,4,3,8*3B
$GPRMC,100759.001,A,2459.7911,N,12130.0889,E,
```

Response

System Reset Successful
Received NACK...
Reserved NACK...

COORDINATE

WGS84_X	FAST
-3022345.041969	-21.536583
WGS84_Y	NORTH
4931732.148932	21.068912
WGS84_Z	UP
2678718.762112	-110.600075

Command

Link start Warm start **Cold start**

No Output NMEA-ASCII Binary

Scan All Scan Port Scan Budd.

Satellites View

Date	Time	Hdop
2007/5/23	10:7:59	1.40
Longitude	Latitude	Speed
121 30' 5.34" E	24 59' 47.47" N	0.0
Altitude	Direction	
14.6U	255.4U	

GNSS

Scatter

Download

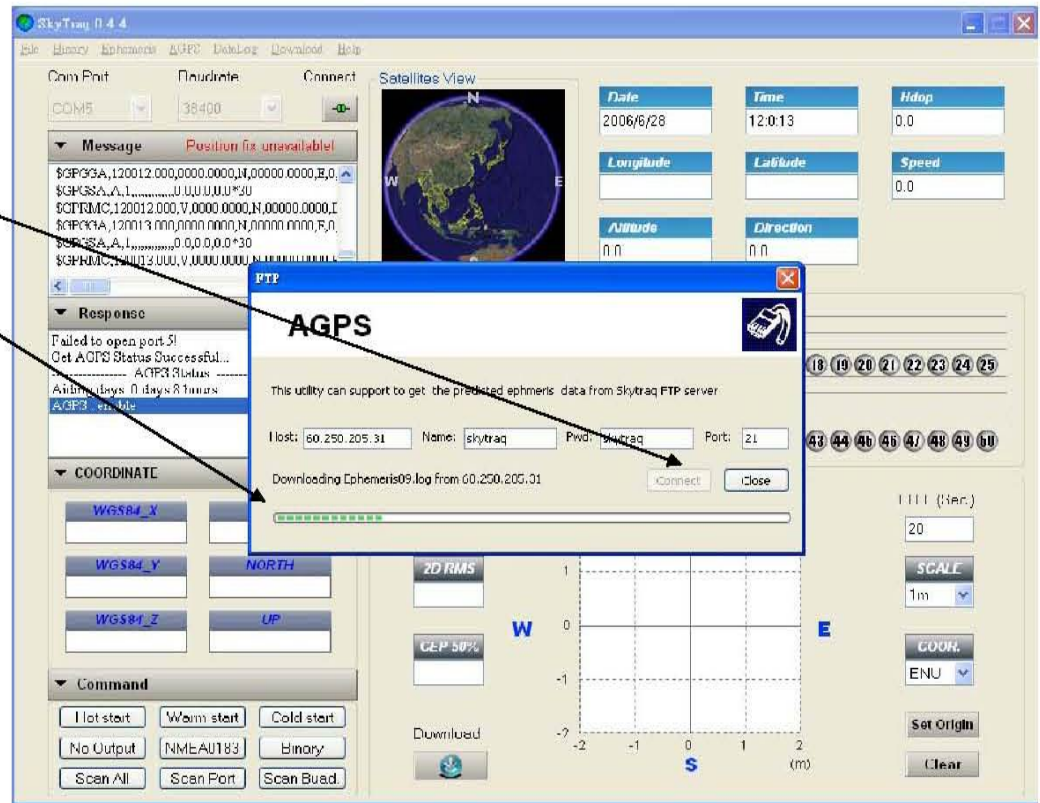
Set Origin

Clear

STEP 3: Automatic download

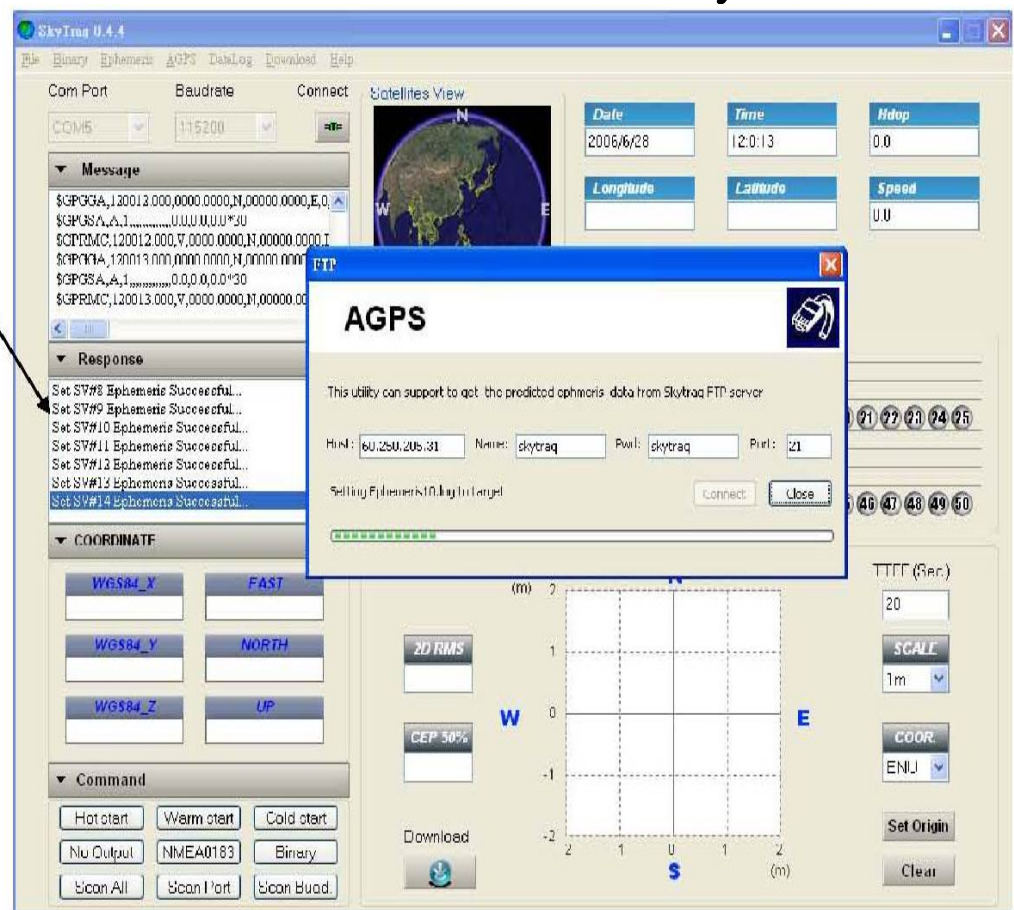
Click Connect

Automatic connect to internet and download



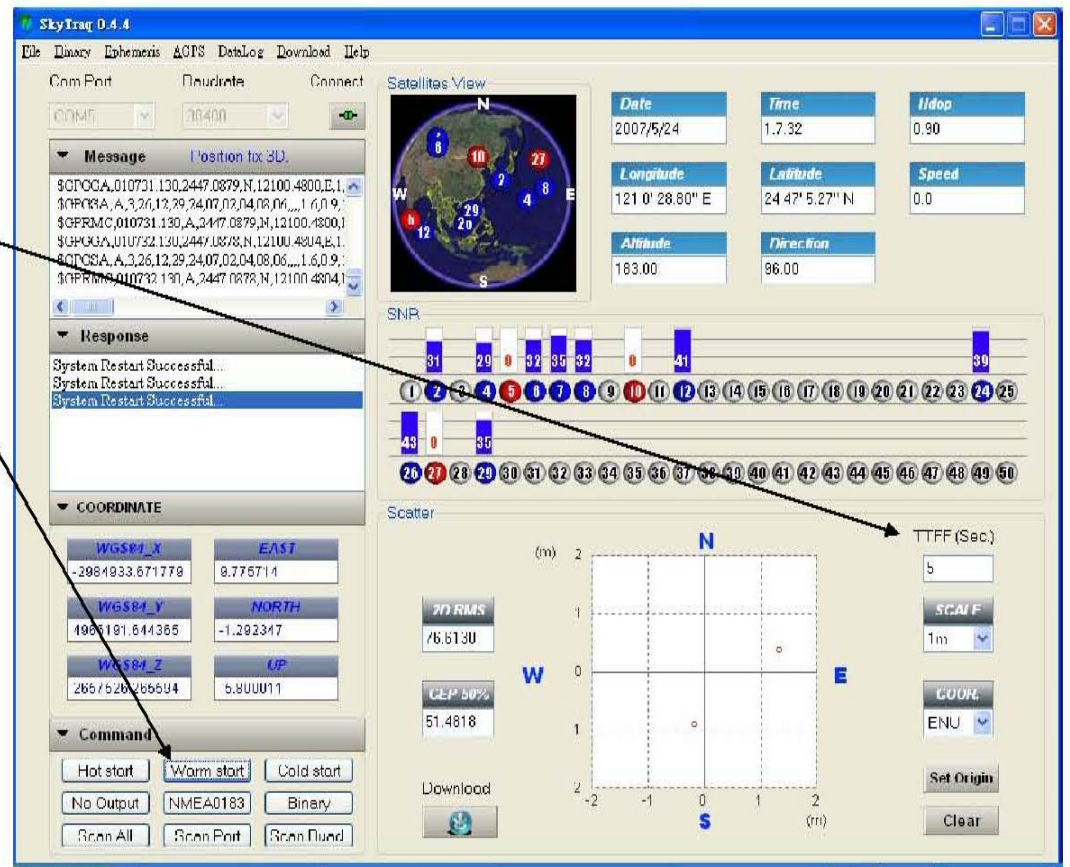
STEP 4: AGPS data download to GPS flash memory

Automatic download data to Flash memory

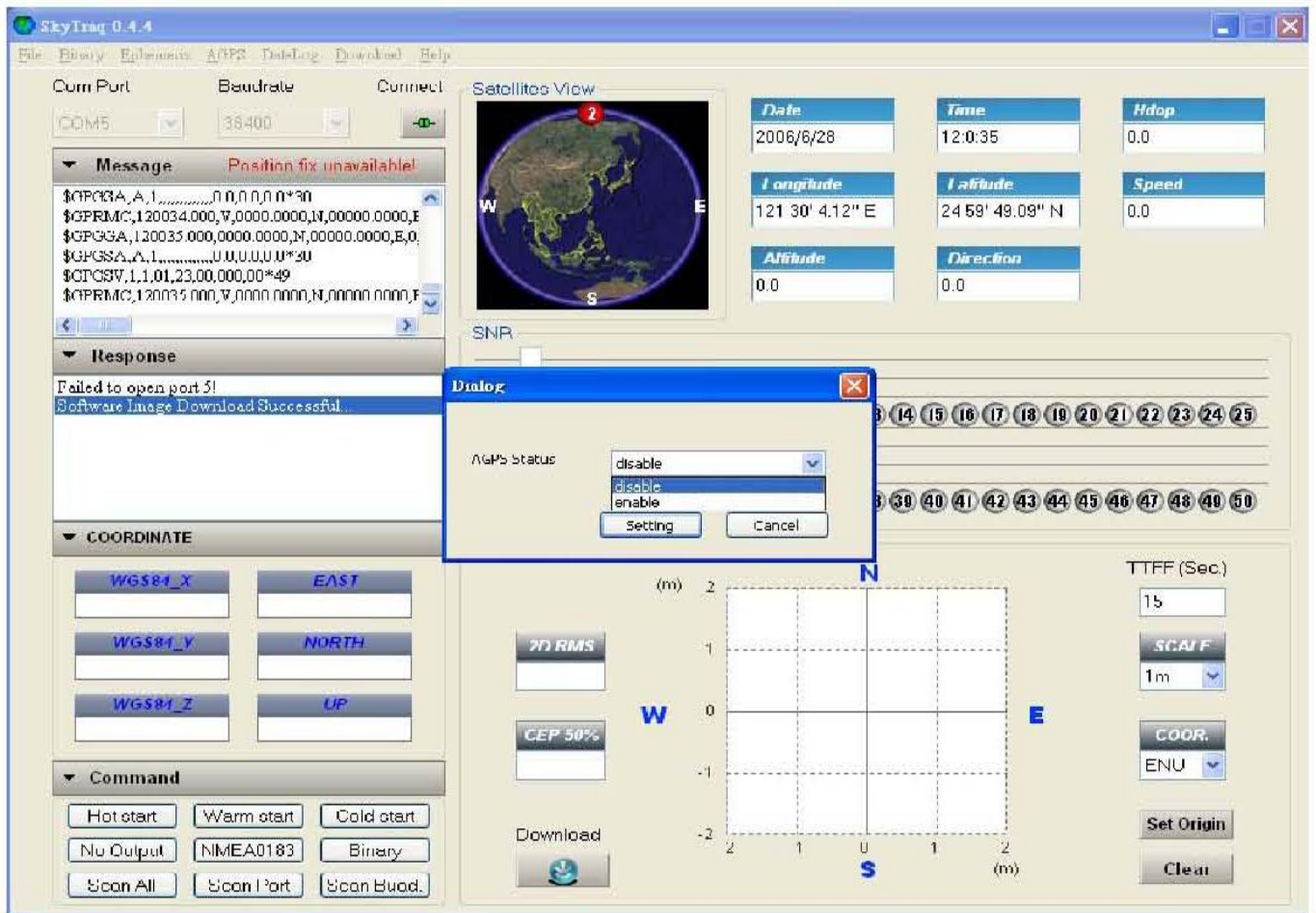


STEP 5: AGPS Download finish

Click Warm Start you will see it fix very quickly



Option : AGPS Enable or Disable



Option : AGPS Status

6 days ,8 hours

SkyTrag 0.4.4

File Binary Ephemeris AGPS DataLog Download Help

Com Port: COM5 Baudrate: 9600 Connect

Message: Position fix unavailable!

Response:

```
Set SV#2 Ephemeris Successful...
Set SV#30 Ephemeris Successful...
Set SV#31 Ephemeris Successful...
Get AGPS Status Successful...
Aiding days: 6 days 8 hours
AGPS: enable
```


COORDINATE

WGS84_X	EAST
WGS84_Y	NORTH
WGS84_Z	UP

Command

Int start	Warm start	Cold start
No Output	NMEA0183	Binary
Scan All	Scan Port	Scan Buad.

Satellites View



Date: 2006/6/28 Time: 12:0:13 Hdop: 0.0

Longitude: Latitude: Speed: UU

Altitude: 0.0 Direction: 0.0

SNR

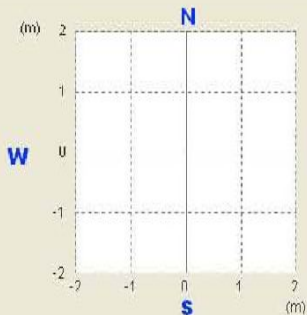
1	2	3	4	5	6	7	8	9	10	11	12	13	14	15	16	17	18	19	20	21	22	23	24	25
26	27	28	29	30	31	32	33	34	35	36	37	38	39	40	41	42	43	44	45	46	47	48	49	50

Scaler

7D RMS

CEP 50%

Download



TTFF (Sec): 32

SCALE: 1m

COORD: ENU

Set Origin

Clear